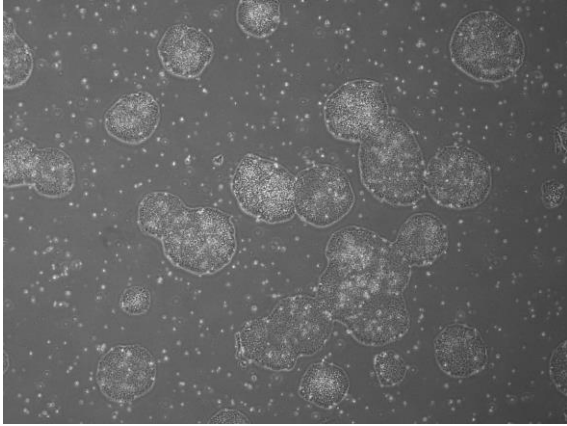
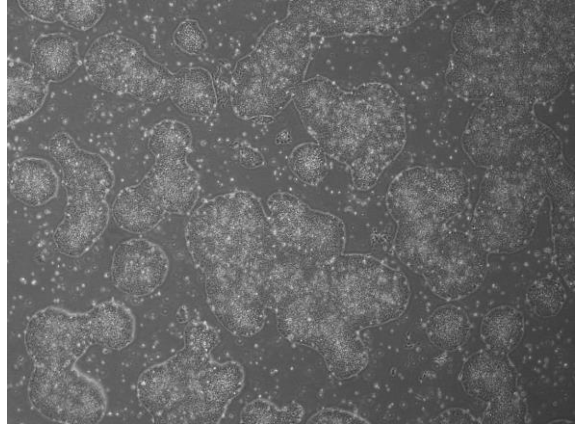


【 CiRA-j-1587 】 Morphology of iPSC colonies

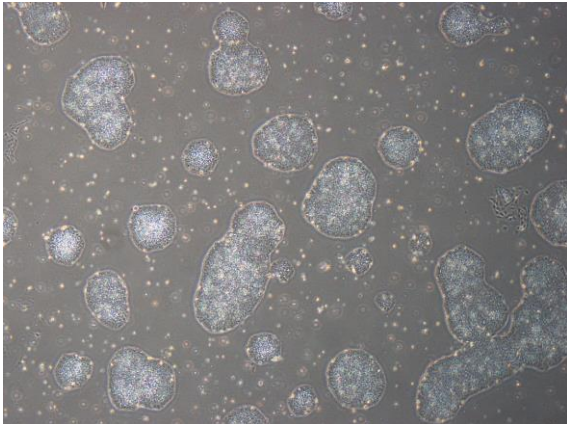
CiRA-j-1587-A: passage-3



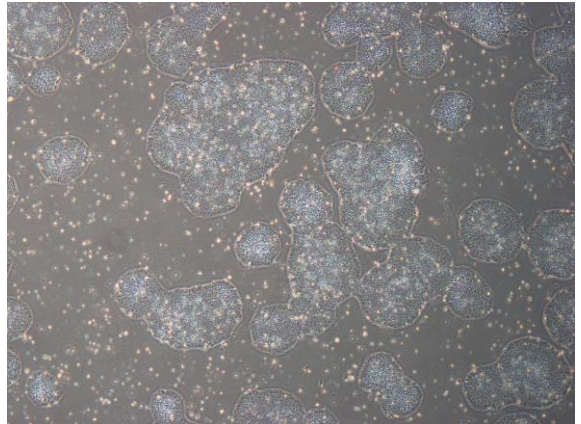
CiRA-j-1587-B: passage-3



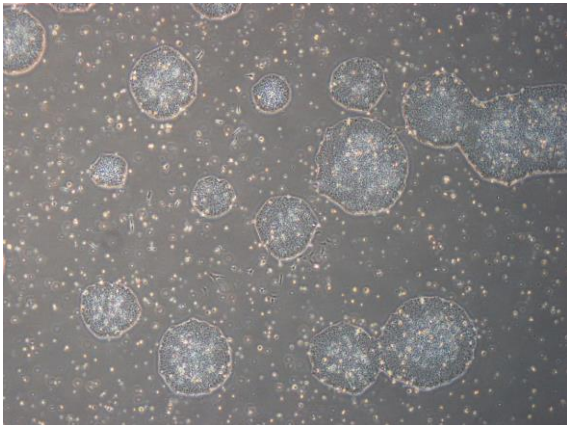
CiRA-j-1587-C: passage-3



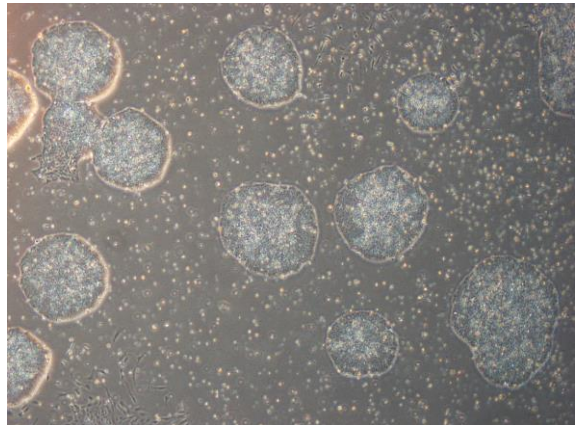
CiRA-j-1587-D: passage-3



CiRA-j-1587-E: passage-3



CiRA-j-1587-F: passage-3



(All images were captured at 4x magnification)